



Grow into Girl Scout Daisies!

For Pre-K girls entering Kindergarten in 2018

We're looking for new **Girl Members** and **Volunteer Leaders** to form local Girl Scout Daisy troops. Sign your girl up to be a Girl Scout Daisy, and consider becoming a Troop Leader. It's easy!

As a **Girl Scout Daisy**, she will:

- **Make new friends**
- **Earn cool badges and patches**
- **Be creative with crafts**
- **Go on outdoor adventures**
- **Run a cookie business**
- **Help the community**

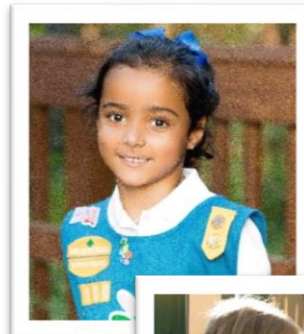
Girl Scout activities are geared toward nurturing the **G.I.R.L. (Go-getter, Innovator, Risk-taker, and Leader) in your Girl Scout!** As a Volunteer Leader, you'll help her become more independent and confident, while making a lifetime of memories together!

New troops are forming now. **Sign her up by June 30, and she will earn her first patch!** If a troop isn't immediately available, your Girl Scout and you can still participate in Girl Scout program activities and community events, until a troop forms near you.

Visit us at www.gsnnj.org to register online. (See registration instructions on the back.)
Questions? Please call 973.248.8200.
Membership Fee: \$40 for Girls; \$25 for Adults.

Service Unit/Town: ORADELL

The contents of this flyer are provided solely as a public service. The event or activity described here is not in any way affiliated with the Oradell Public School, nor is it endorsed by the Oradell Board of Education.



Open House Nights

April 17, May 15 & June 12
5:00 p.m. to 7:30 p.m.

Riverdale Service Center
(95 Newark Pompton Turnpike, Riverdale)

Paramus Service Center
(300 Forest Avenue, Paramus)

Randolph Service Center
(1579 Sussex Turnpike, Randolph)

Paterson Resource Center
(Center City Mall, 301 Main St., Paterson)

New Girl Scout Registration - Entering Kindergarten Fall 2018

- Go to www.gsnnj.org and click JOIN NOW
- Click on **GET STARTED TODAY**>Click on **JOIN TODAY**
- Fill in the information, for Grade entering ...

If you register between April 1 to June 30, 2018: For Pre-K girls entering Kindergarten in 2018, select **"Grade Pre-K"**

If you register after July 1, 2018: For Pre-K girls entering Kindergarten in 2018, select **"Grade K"**

- Click **CONTINUE**
- If you have been given a troop number, enter Troop number in the search box. Remove the zip code from the zip code search box, and click **SEARCH**.
- If you have been given a Service Unit/Town name, enter the town name and click **SEARCH**
- Select the Service Unit/Town Name by checking the box to the left; the selection moves to the top of the results and click **NEXT**
- Complete the additional membership information, Click **SUBMIT**
- At the **Registration Summary** page, the option to **ADD ANOTHER MEMBERSHIP** or **CHECKOUT** is available.
 - Registering more than one person? Choose **ADD ANOTHER MEMBERSHIP** and complete the process.
 - Ready to purchase membership? Click **CHECKOUT**
- The screens will guide you through the remainder of the process to complete the registration.
- Your registration is now complete! If you do not receive confirmation emails from us, check your spam folder. Look for an email from **"Member Community"** to set up a password for the MyGS Member Profile. **IMPORTANT NOTE:** Membership fees are non-refundable.

New Adult or Volunteer Registration Only

- Go to www.gsnnj.org>Click **VOLUNTEER TODAY**>Click **GET STARTED TODAY**
- Click on **VOLUNTEER TODAY**
- Complete the information requested
- Volunteering? Choose **"I WANT TO JOIN AS A VOLUNTEER"** and click **CONTINUE**. For Member only, choose "I want to be a member"
- If you have been given a troop number, enter Troop number in the search box. Remove the zip code from the zip code search box, and click **SEARCH**.
- If you have been given a Service Unit/Town Name, enter the name and click **SEARCH**
- Select the Service Unit/Town Name Troop by checking the box to the left; the selection moves to the top of the results and click **NEXT**
- Complete the additional membership information, Click **SUBMIT**
- Volunteering? **SELECT THE ROLE OF TROOP COMMITTEE MEMBER** in the appropriate Recruitment troop by checking the box to the left of the description; the selection moves to the top of the results and click **NEXT**
- The screens will guide you through the remainder of the process to complete the registration.
- Within 15 minutes, you will also receive an email invitation from **TheAdvocates@VerifiedVolunteers** with a link to complete your background check. Please check your spam folder if you do not receive it. Look for an email from **"Member Community"** to set up a password for the My GS Member Profile. **IMPORTANT NOTE:** Membership fees are non-refundable.

Questions? Contact GSNNJ Customer Care at 973-248-8200.

Please Note: Sometimes troops may not be immediately available in your community. Paying for membership does not guarantee placement in a troop. However, once a girl becomes a Girl Scout, she can choose to attend fun programs on her own such as those in the LINK Program Guide in the "Events" section at www.gsnnj.org, or other community events until a